



# DOMESTIC

## *BUILDING SOLUTIONS*

Customised Steel buildings for agricultural, industrial or domestic usage



[www.steelbuildingsandcladding.co.uk](http://www.steelbuildingsandcladding.co.uk)



# Intro

First Fix Installation offer a complete range of garage, carport and awning solutions to suit all budgets and design requirements. Our aim is to ensure we have a solution for every situation.

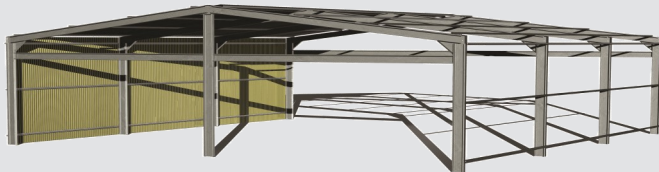
Our range extends well beyond the traditional clad garage, offering horizontal cement fibre claddings, with rendered or texture coated finishes. We can even supply extended eaves on our buildings.

If you are looking to update your existing garage, or add value to your home with the addition of a new garage then FFI are confident they will have a solution for your needs.

## Key Elements

As a matter of principle, First Fix Installation employ the services of industry leading engineers to design and test the entire range of FFI structures to ensure there is no

compromise in quality or strength. First Fix Installations structures are the most robust portal frame buildings available on the market.



### 1. Wider Domestic Building Spans

First Fix Installation domestic garages range from 3m to 9m wide and up to 3.6m high. Even the bay widths are wider with a maximum of 4m wide which ensures less bays are required for longer buildings.

### 2. Variable Roof Pitches

First Fix Installation offer the choice of a 10, 15 and 20 degree roof pitch on the entire domestic building range. The portal frame rafter design provides additional head room, making it ideal for maximising internal storage space.

### 3. Fully Customisable Design Options

Customers can customise any building to suit their design requirements. Buildings can be designed to any size and a full range of standard and unique optional features are available to provide those creature comforts.

### 4. Fully Bolted Portal Frame Connections

Every First Fix Installation connection is fully bolted with high tensile M12 or M16 portal bolt sets for optimal strength.

### 5. Pre Cut and Punched Portal Members

All portal members are pre cut and punched to the exact size and position for ease of installation.

### 6. Folded Portal Frame Connectors

The entire range of First Fix Installation portal frame connection brackets have been accurately designed and folded to increase bracing strength at each connection point. Each bracket is pre punched to match the column and after punching for ease of installation.

### 7. Superior Choice Of Finishes

First Fix Installation offer an extensive range of external cladding options to enable customers to match the structure to their existing surroundings.

### 8. Site Specific Design Specification

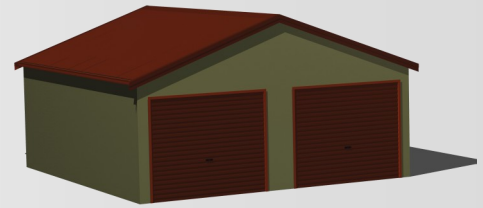
First Fix Installation design each structure specific to its proposed location to ensure the correct wind, usage and shielding factors are applied for optimal strength.

### 9. Minimum C150 Portal Member Sizes

First Fix Installation specify C150 (6inch) portal member sizes as a minimum requirement in their entire range to maximise strength.

### 10. High Quality Products as Standard

All First Fix Installation products are supplied to British Standards BS6399 (part 2) which ensures quality and strength are not compromised.



Garage with windows and Entrance Door



Garage with extra wide Roller Door



Single Garage with Side Wall Entrance door



Single Garage with Entrance Door on gable

[info@steelbuildingsandcladding.co.uk](mailto:info@steelbuildingsandcladding.co.uk)

## Service

First Fix Installation are focused towards providing exceptional service as their first priority.

First Fix Installation understand that most customers prefer a very personalised service, therefore our team are committed to ensuring that customers are completely satisfied with their purchase from start to finish.



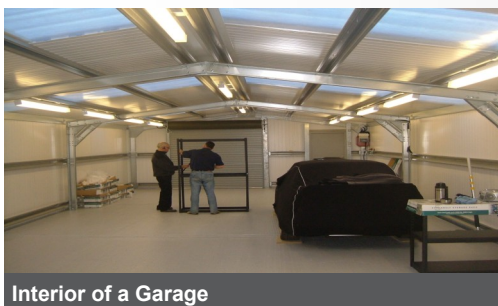
Double Garage with Gable Roller Doors



Single Carport



Garage with 5 Side Wall Roller Doors



Interior of a Garage

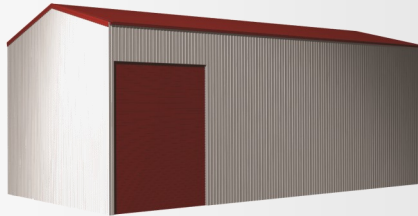
## Affordability

In comparison to other conventional forms, of building such as bricks and mortar, First Fix Installation structures are extremely cost effective and affordable. The light weight composition of the buildings reduce production and installation costs.

## Versatility

With a range of buildings to suit every application, First Fix Installations can ensure they have a solution to suit every customers needs.

First Fix Installation offer a range of unique product features which allow buildings to be customised beyond the conventional steel box most garage companies supply.



## Options

First Fix Installation offer the following **STANDARD** options:

- *Roller Doors*
- *Windows*
- *Skylights*
- *Roof Vents*
- *PA Doors*
- *Lean-tos*
- *Garaport*
- *Mezzanine Floors and Staircases*
- *Sliding Doors*
- *Partition Walls*
- *Insulation*
- *Automatic Door Openers*
- *Lean-tos*

First Fix Installation offer the following **UNIQUE** options:

- *Stable Bay Systems*
- *Horizontal Wall Claddings*
- *Decorative Door Corners*
- *Stud Wall Systems*
- *Front, Back and Side Eaves*

## Buy British

At First Fix Installation our proactive approach in supporting the British economy means you can rest assured that we source everything from British companies. All our materials comply with British standards BS6399 (part2) and exceed ISO9001-2008 leaving you with a building designed to withstand our challenging climate.

## Payment Secured

First Fix Installation offers to all their clients a secure payment guarantee. This Secured Payment consists of a legally binding Advanced Purchase Agreement whereby the customer can lodge agreed funds with the Nat West Bank until their bespoke building arrives.

It is a means of providing comfort to customers and clients that they will receive the goods which they have ordered and for which they have paid.



# CONTACT US TODAY

# 01268768141 07810634705

## Environmentally Friendly

In comparison to hot rolled steel, our cold rolled steel expands much less energy in its creation. The high tensile galvanised steel provides superior strength to weight ratio resulting in a reduced quantity of steel required to construct our steel buildings and therefore ensuring less transportation costs and fuel consumption.

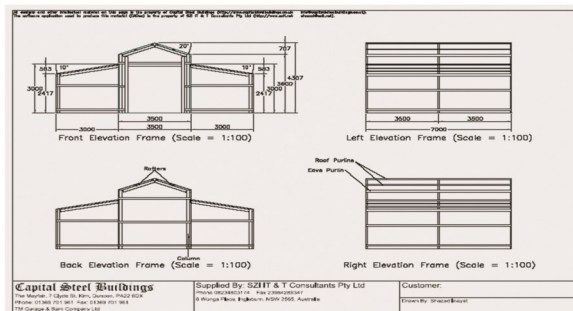
We are proud that all these facts contribute to a reduction in the carbon footprint traditionally left by alternative hot rolled steel buildings.

Health and Safety is a major in any building and ours is no exception. The reduced weight of our buildings means a reduction in heavy machinery required on construction sites which subsequently minimises associated risks.



## Industry Leading

First Fix Installations are a distributor of Capital Steel Buildings Ltd who have been at the forefront of technology in the cold rolled steel market both in the UK and other countries around the world for many years. Their extensive testing using the University of Strathclyde engineering department through to the software that is developed, has allowed us to lead the way with innovations like our complete software package.



Not only does it plan your buildings before your eyes, it can also provide you with an installation manual should you opt for a DIY project. Planning authorities are no longer to be feared as our systems can help you with drawings and even calculations to make planning submission as easy, simple and pain free as possible.

# [www.steelbuildingsandcladding.co.uk](http://www.steelbuildingsandcladding.co.uk)